

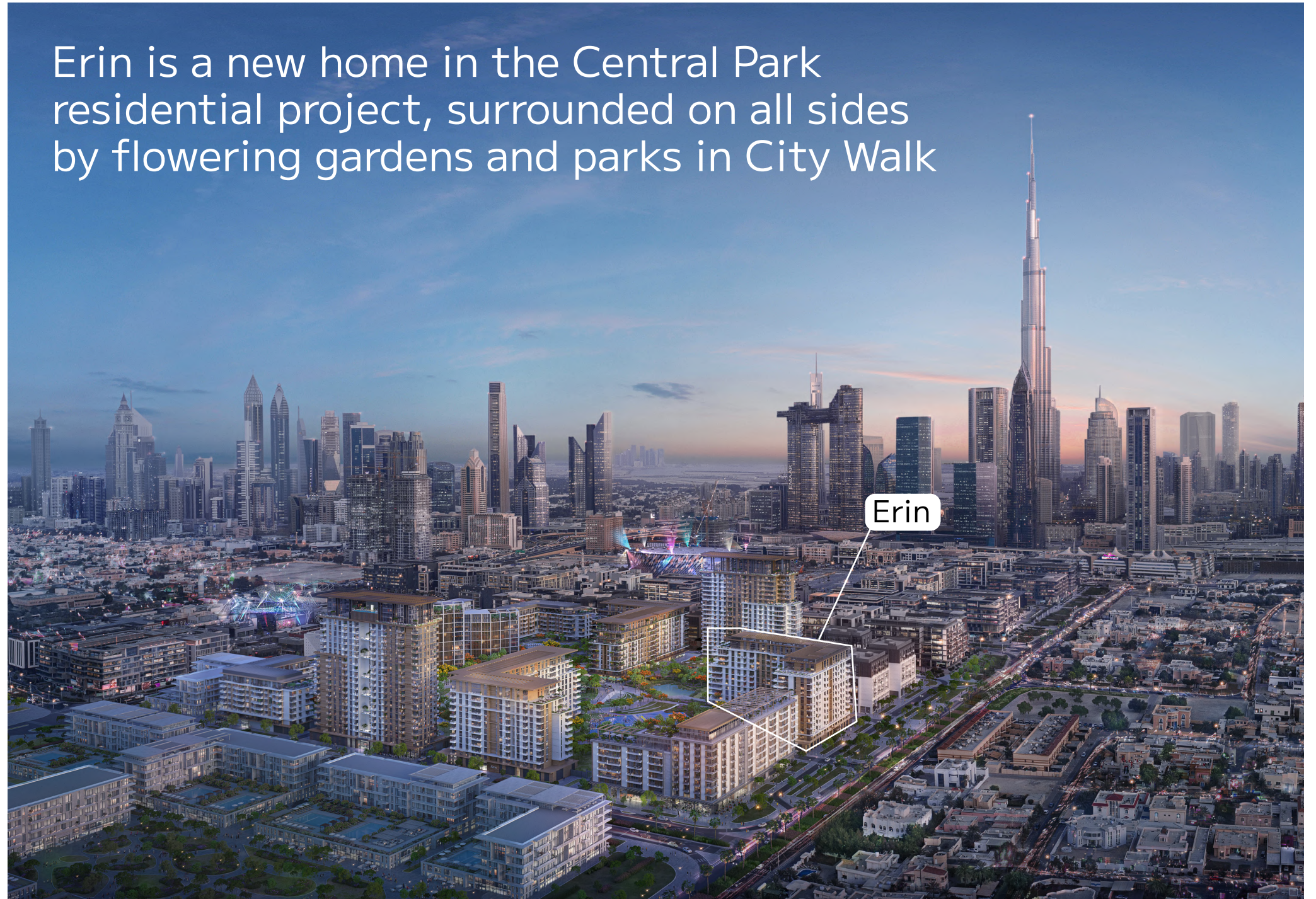
CENTRAL PARK

City Walk project brochure

CITY WALK



Erin is a new home in the Central Park residential project, surrounded on all sides by flowering gardens and parks in City Walk





CENTRAL
PARK
CITY WALK

CITY
WALK

SHEIKH
ZAYED RD.

COCA-COLA
ARENA

CENTRAL
PARK

+971 (4) 364-5133

Quick exit to Sheikh Zayed Road

Central Park is surrounded by Jumeirah and Sheikh Zayed Road, providing fast and convenient access to other parts of Dubai. City Walk shopping center is just 1 minute away. The only 7-star hotel in the world, Burj Al Arab, is a 15-minute drive from La Mer Beach and a 10-minute drive from Jumeirah Beach. Dubai International Airport is 15 minutes away,

In Jumeirah area

City Walk is an entertainment district in Dubai, known for its shopping malls and entertainment base. This location is located in the Jumeirah area, in close proximity to the most popular beaches and hotels in the city.

Autonomous quarter City Walk

This is an autonomous quarter with its own highly developed infrastructure. Establishments and boutiques form whole "streets" here, and there is a square for public events in Wolf City Dubai.

+971 (4) 364-5133

The new building of the Central Park project

ERIN

CENTRAL
PARK
CITY WALK

Natural elements in building design

The gray-brown palette of the building complements the natural landscape, while the flowing greenery seems to permeate the houses and dilute the modern architecture, giving lightness to the monumental buildings.

+971 (4) 364-5133

Designer lobby
with bright accents





From apartments to penthouses

Central Park offers elegant 1 and 2 bedroom apartments or spacious 3 and 4 bedroom residences. Also, the project offers penthouses.





Finishing in light colors

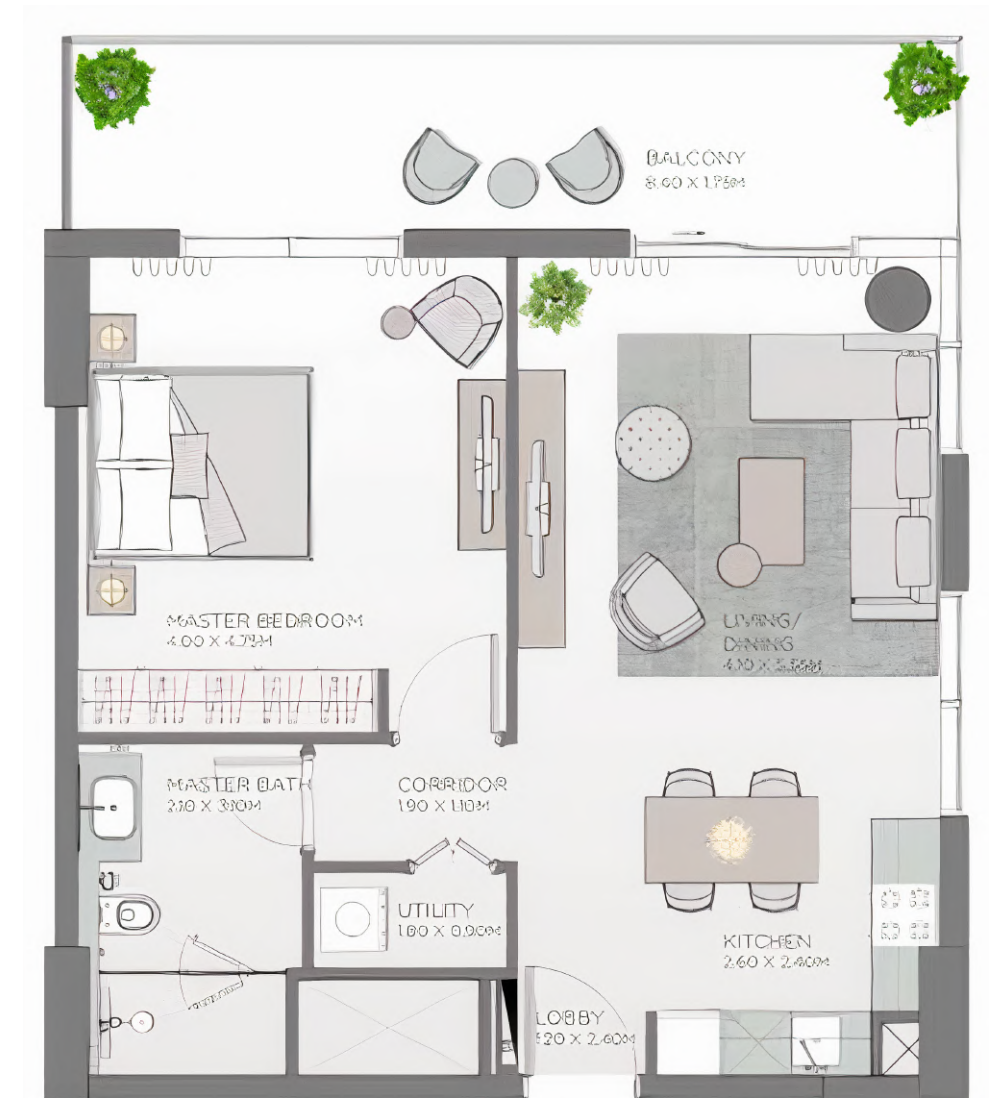
A soft palette of finishes in light colors allows you to diversify the interior with bright accents without overloading the space with details.



Panoramic windows

Panoramic windows offer a panoramic view of the park, the distance of the sea and the skyline of Dubai.

Layouts of the apartments with 1 bedroom



LAYOUTS of apartments with 2 bedrooms



Layouts of apartments with 3 bedrooms



LAYOUTS of apartments with 3 bedrooms



Layouts of apartments with 4 bedrooms





Views from the balcony

+971 (4) 364-5133

Gym with panoramic view

Work out in the equipped cool room at any time of the day, admiring the panoramic view.

Species pools

Relax in the outdoor swimming pools, surrounded by greenery, or relax on the plush sun loungers in the terrace seating area.





Skate park



The territory of the park for
the residents of the project



+971 (4) 364-5133

Cafes and restaurants

Residents of Central Park at City Walk and their families can visit any restaurants and cafes they like. Choose dishes of your favorite gastronomic cuisine and spend the evening with your loved ones.







Shopping center a couple of minutes

In 9 minutes you can reach the Dubai Mall and stroll through luxury shops, watch new movies in the cinema and dine in the best cafes.



Project developer — Meraas

Meraas is a private holding company headquartered in Dubai. Since its founding in 2007, Meraas has been developing the construction, hospitality, catering and entertainment business. The developer's portfolio includes 28 premium residential complexes in Dubai.

+971 (4) 364-5133

Construction will be
completed in 2025



CENTRAL
PARK
CITY WALK

Book a viewing by phone:
+971 (4) 364-5133





EUROPEAN
PROPERTY
AWARDS

Best real
estate agency
Moscow, Russia
2018-2019



EUROPEAN
PROPERTY
AWARDS

Best real
estate agency
Moscow, Russia
2020-2021

URBAN
AWARDS
2020

Лучшее
агентство
недвижимости
2020



Whitewill



Whitewill Real Estate Experts

We sell deluxe, premium and business class property in more than
140 residential developments in Dubai

+971 (4) 364-5133



Q1 2022
EMAAR
TOP 10



Q2 2022
EMAAR
TOP 5



START 2022
DAMAC
TOP 20

